

Aquatic Invasive Species Rapid Response Initiative

Tammy Mitchell

Illinois Environmental Protection Agency



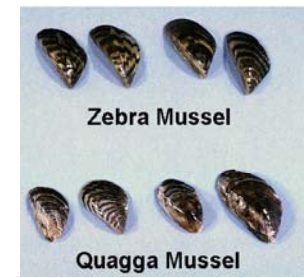
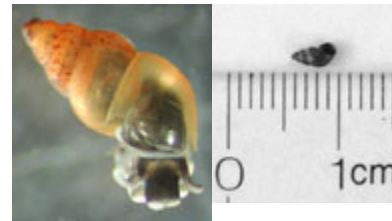


GLRC Background

- Great Lakes Interagency Task Force (IATF)
 - Created by Executive Order in 2004
- Great Lakes Regional Collaboration (GLRC)
 - Tasked with development of comprehensive Great Lakes Strategy
 - Completion date December 2005
- Aquatic Invasive Species (AIS) Strategy Team
 - Tasked with development of GLRC AIS Strategy

Purpose

- Prevent environmental harm
 - Degradation of habitat
 - Depletion native & naturalized species populations
 - Disruption of food webs
- Prevent economic harm
 - Degradation of fisheries
 - Damage of infrastructure
 - Interference with recreational uses
- Prevent harm to human health
 - Introduction of bacteria or viruses





GLRC AIS Strategy

- Prevention
- Integrated AIS Management Program
- Education and Outreach
- Legislation and Research



GLRC AIS Rapid Response Initiative Needs

- Identification of resources
 - Pool of experts, equipment
- Method of AIS identification
 - Monitoring, Management, Education
- Rapid and coordinated response
 - Multi-agency, multi-jurisdictional response, defined roles and responsibilities
- Effective communication
 - Multi-agency, multi-jurisdictional communication tree



Proposed Activities

- Develop points of contact
 - External
 - Internal
- Establish communication protocols
 - Communication trees
 - Incident command
- Conduct rapid response exercises
 - Practice
 - Refine



Points of Contact

- **Tier 1**

- **Public Database**

- <http://www.anstaskforce.gov/experts/search.php>

- **Public contact**

- Notification, questions and follow-up

- **Tier 2**

- **Federal AIS Rapid Response Subcommittee**

- Federal Expert Database – technical and taxonomic

- Expand the effort to include state and local points of contact

Browser window showing the URL: <http://www.anstaskforce.gov/experts/search.php>. The browser interface includes a search bar with the text "ance Species Task Force Expert Database", a search button, and various browser tools like "File", "Edit", "View", "Favorites", "Tools", and "Help".



Authorized Users:
Username

Password

This database was designed to direct users to invasive species experts. It has been set up as a 2-tier system with the first tier accessible to the public. The public portion of the database will guide you to a state contact who acts as a filter for information and identifications. If they can't answer your question, these state contacts have the ability to log in to the second tier experts.

Search the Invasive Species Experts Database:

Choose a state where the specimen was found:

State:

If you have any questions regarding the Experts database or would like to be added as an expert, please contact david_britton@fws.gov

Other Resources for Taxonomic Experts

- [TRED](#) (Taxonomic Resources and Expertise Directory)
- [DAISIE](#) (European Alien Invasive Species Expertise Registry)
- NOAA's Taxonomic Cadre



Communications Protocols

- Rapid identification of new invaders
 - State or local monitoring/management efforts
 - Habitat monitoring
 - Sighting
- Reporting Mechanism
 - Early notification of the designated authority
 - Education and advertisement of reporting mechanism
 - Reinforcement of message



Communications Protocols - Internal

- Confirmation by taxonomic experts
- Notification of participating agencies via “Response Coordinators”
- Designate Central Communication Officer
- Designate Public Communication Officer
- Form Ad Hoc “Scientific Assessment Committee” to advise decision making
- Management Approach Decision



Rapid Response Exercises

- AIS Rapid Response Exercise – Erie, PA
 - Mock communication and “hands on” exercises
 - Test response structure and adaptability
- Botulism Initiative – Romulus, MI
 - Provided for exchange of current scientific knowledge
 - Discussed research needs
 - Examined management needs
 - Explored communication protocols



This is all wonderful but...

How is this related to “on
the ground” habitat
restoration and protection?



We Need You!

- Early detection can be the key to effective response and management of AIS
 - Education of staff and volunteers
 - Visuals, Location Information, Contact Information
 - Train to be alert to changes and seek opinions
 - Long term monitoring
 - Necessitates that a closer look be taken at local biological characteristics
 - Provides data useful to management decisions

Who are the Illinois Contacts?

Pat Charlebois

Illinois Natural History Survey
Lake Michigan Biological Station
400 17th Street
Zion, IL 60099
Phone: (847) 872-8677
E-Mail: charlebo@uiuc.edu

Steve Shults

Illinois Dept. of Natural Resources
Region V Fisheries
11731 State Hwy 37
Benton, IL 62812
Phone: (618) 435-8138
E-Mail: steve.shults@illinois.gov



Presenter Contact Information...

Tammy Mitchell

Illinois Environmental Protection Agency

1021 North Grand Ave. E. #5

P.O. Box 19276

Springfield, IL 62794-9276

Phone: (217) 524-2292

E-mail: Tammy.Mitchell@illinois.gov